

Lay of the Land

EAST ANGLIAN LANDSCAPE NOW

Lay of the Land is an exhibition celebrating the features that make the East Anglian landscape so distinctive. It will encompass recent work by artists and makers who show us why the east of England has maintained an enduring appeal among present day creative minds, how the landscape is changing, and the way it is represented in material terms in the work they produce.

‘East Anglia is an unfixed place of give and take, a land in continual argument with water, a marine fetch of counties, yet each with deeply interior and almost Continental airs and all edged to the west by a soggy one-time swamp.’

The Beauty of East Anglia - From Country Life May 5, 2014

Exhibition is curated by Paul Barratt and Paul Vater
© Contemporary and Country 2024



Printed on paper with Forest Stewardship Council accreditation from managed sources.



© Caroline Mackintosh

Lay of the Land

EAST ANGLIAN LANDSCAPE NOW

25 SEPT - 26 OCT

FREE ENTRY

THE FERMOY GALLERY
SHAKESPEARE BARN

ST. GEORGE'S GUILDHALL, 29 KING ST.
KING'S LYNN, NORFOLK PE30 1HA
WED, THURS, FRI & SAT FROM 11AM TO 4PM

CONTEMPORARYANDCOUNTRY.COM

Funded by:



Partners:



Supported by:



In collaboration with:
National Trust

Artists and makers in "Lay of the Land" show us how ideas have moved away from the 'picturesque' toward a more specialised and nuanced idea of landscape.

Painters have traditionally defined the parameters of the landscape genre, and

there are well-regarded practitioners included in this exhibition who have developed their own distinctive pathway fit for the twenty-first century.

Exhibitors in "Lay of the Land" are motivated by their relationship to the land in a range of creative disciplines

such as sculpture, photography, ceramics, glass, wood-turning and shell work. The collective sense of stewardship of our environment has marked a sea-change in approach, as the environmental movement has influenced how we think about the land and how we would like to see it being

used. This fresh thinking has either broken with tradition, or re-instated more tried and tested methods of husbandry that bring back or enhance more 'natural' elements that have been under pressure for decades from commercial land use interests.



KAREN BEK



LORRAINE BEWICK



MARY BLUE



CAROLYN BROOKES-DAVIES



SIMON CARTER



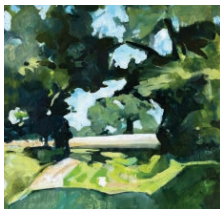
FLISS CARY



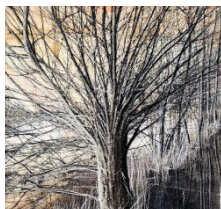
CAROLINE CHOUER-TISSIER



EILEEN COXON



WILL CUTTS



HELEN DERBYSHIRE



MIKE DODD



MARK EDWARDS



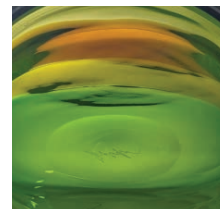
JAMES EVANS



VICTORIA FENN



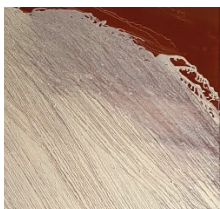
KATHRYN HEARN



STEWART HEARN



JANE HINDMARCH



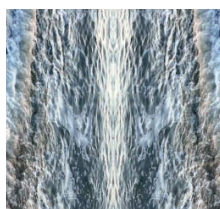
SAM HODGE



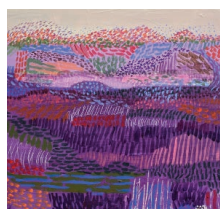
LAURA HUSTON



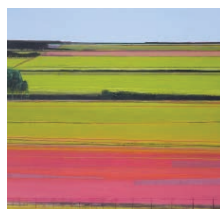
JAYNE IVIMEY



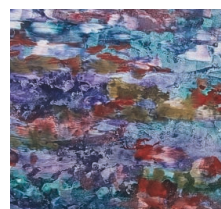
BILL JACKSON



LINDA JAMIESON



CAROLINE MACKINTOSH



PANDORA MOND



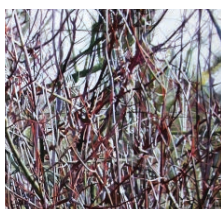
TESSA NEWCOMB



TIM PLUNKETT



JONI SMITH



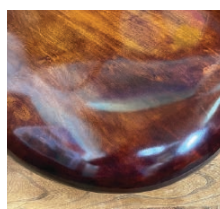
PAUL P SMITH



NESSIE STONEBRIDGE



FRANK WATSON



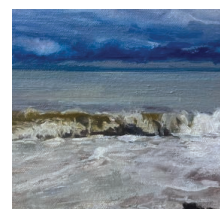
JACK WHEELER



KATRINA WHEELER



CECILIA WILLIS



PETER WYLIE

